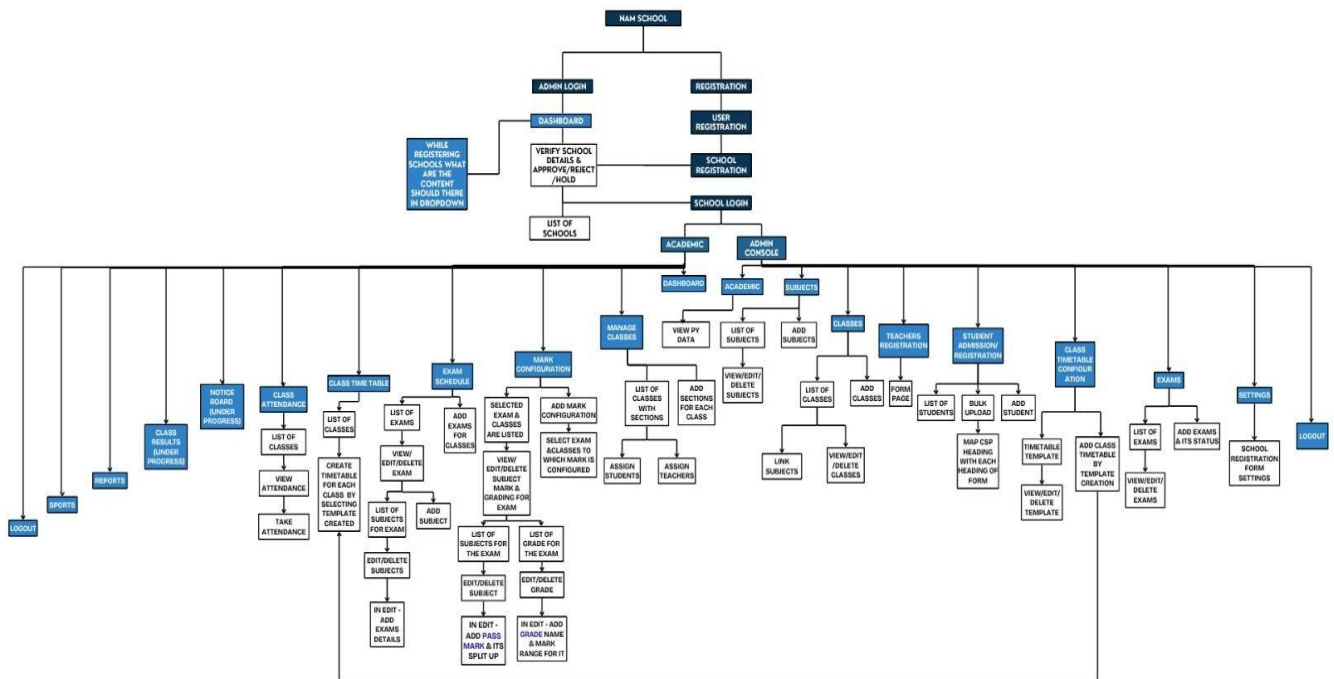


FLOWCHART:



1. Overview:

The Nam School Management System is a web-based application designed to streamline academic, administrative, and student lifecycle workflows in schools. It supports both administrative and academic tasks, from registration to results.

2. User Roles:

Admin: Approves schools, manages users, and configures global settings.

School Admin: Manages classes, students, teachers, and timetable within their school.

Teacher: Handles attendance, exams, and subject-wise grading. **Student:** Views timetable, exams, and reports.

3. Functional Modules:

3.1 Registration:

Form Input: School Name, Address, Type, Board, Contact Info.

Dropdown Contents: Board (CBSE, ICSE, State Board), School Type (Public/Private) .

Validation: Unique School ID Action: Submit for approval.

Approved: After registration Admin must give the access to the school by approving them. And also there are others two options that Admin can do they are “HOLD” and “REJECT”.

3.2 Admin Login:

Dashboard: List of registered schools, Approve/Reject pending

Schools Manage Classes: Assign students, Assign teachers Marks.

Configuration: Set pass mark and grading scheme, Add/edit exam type and weightage.

3.3 School Login:

Academic Dashboard: Overview of class count, students, timetable, exams.

Admin Console:

Subjects: Add/Edit/Delete subjects, Assign subjects to classes

Classes: View/Add/Edit/Delete classes, Assign sections, Link subjects.

Teacher Registration: Teacher Form Page, Assign to subject and class.

Student Registration: Manual form, Bulk upload via Excel, Excel column mapping.

3.4 Class Timetable Configuration:

Timetable Template: Create/Edit/Delete reusable templates Assign.

Template: Select template for each class, Modify timetable based on template.

3.5 Exam Management:

Exam Schedule (Admin): Add/View Exams, Add Subjects, Edit/Delete.

School Exams: List of Exams & Status, View/Edit/Delete Exam Templates.

3.6 Class Time Table:

List of Classes, Create/Update Time Table: Assign subjects, Select template Edit/Delete Time Table Entries.

3.7 Class Attendance:

List of Classes, Take Attendance, View Attendance Report.

3.8 Reports:

Attendance Report, Exam Results, Grading Summary, Classwise Performance.

3.9 Class Results (Under Progress):

Placeholder for future integration of grading & marksheets.

3.10 Notice Board (Under Progress):

Placeholder for announcements and circulars.

3.11 Sports:

Placeholder for student sports performance and events.

3.12 Settings:

School Registration Form Settings, Customize input fields, headings, validation rules.

4. Logout:

Ends user session, Redirects to login screen.

5. Appendix:

Example Dropdowns for Registration: Board: CBSE, ICSE, State Board
School Type: Government, Private Medium: English, Tamil, Hindi.